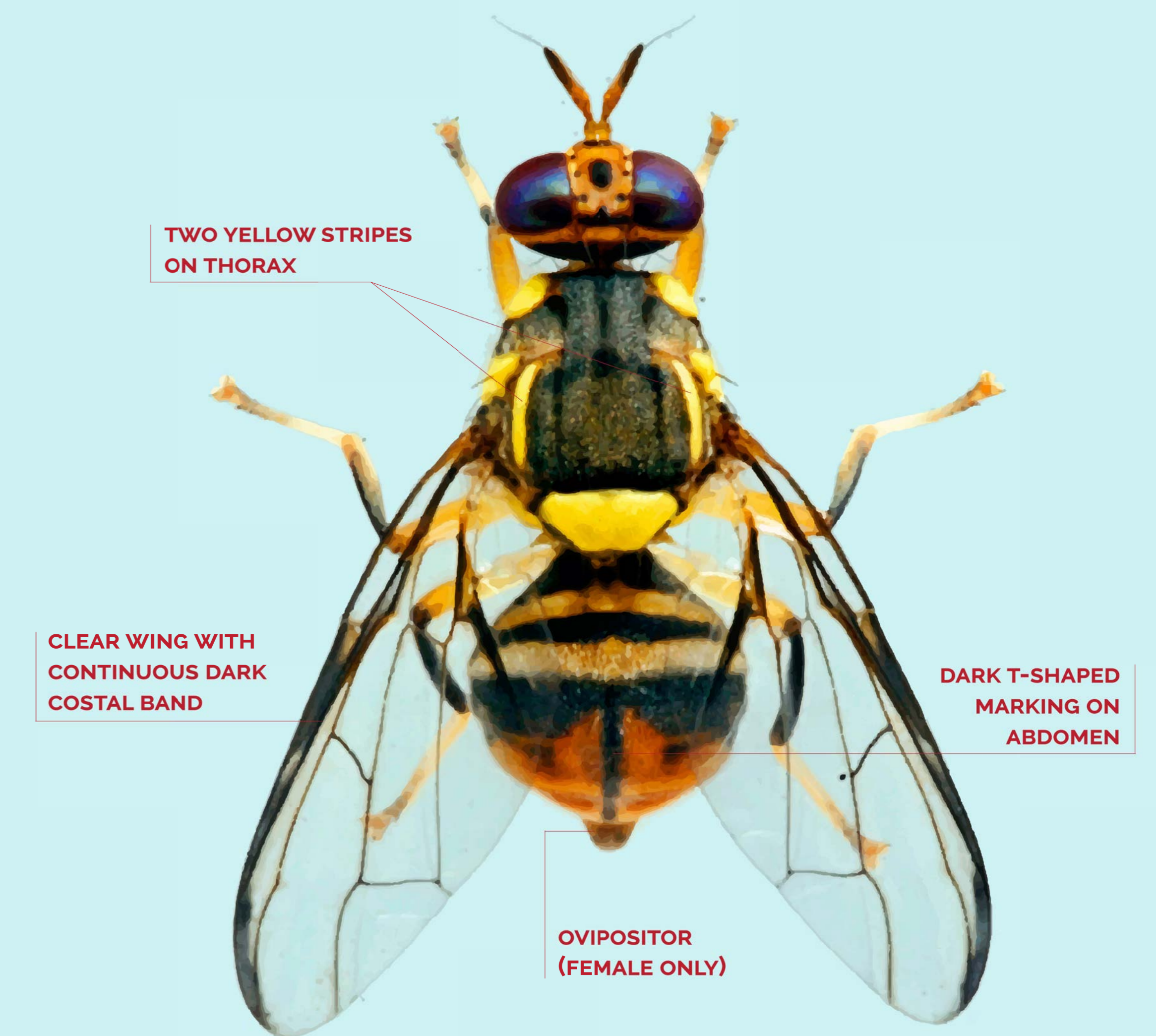


# ACTION PLAN

## for *Bactrocera dorsalis*

ALSO KNOWN AS ORIENTAL FRUIT FLY



### Abbreviations

- Bactrocera dorsalis* - BD
- FruitFly Africa - FFA
- Methyl Eugenol - ME
- Male annihilation technique (MAT)

## 1. DELIMITING SURVEY

### OBJECTIVE

- Assess if detection represents an outbreak.
- Determine size of affected area.

### TRAP DENSITY – ZONES

- Total area 7 km x 7 km around trap
- Core area 1 km x 1 km grid around trap
- Core area: 10 ME traps + 10 Biolure
- Remaining 48 km<sup>2</sup>: 2 ME traps /km<sup>2</sup>
- ME traps every 2 km on transect roads for first 10 km, every 5 km for the next 40 km, every 10 km for the remaining kilometres within 50 km radius.
- Monitor traps weekly
- Send records and GPS of traps to NPPO (DAFF).

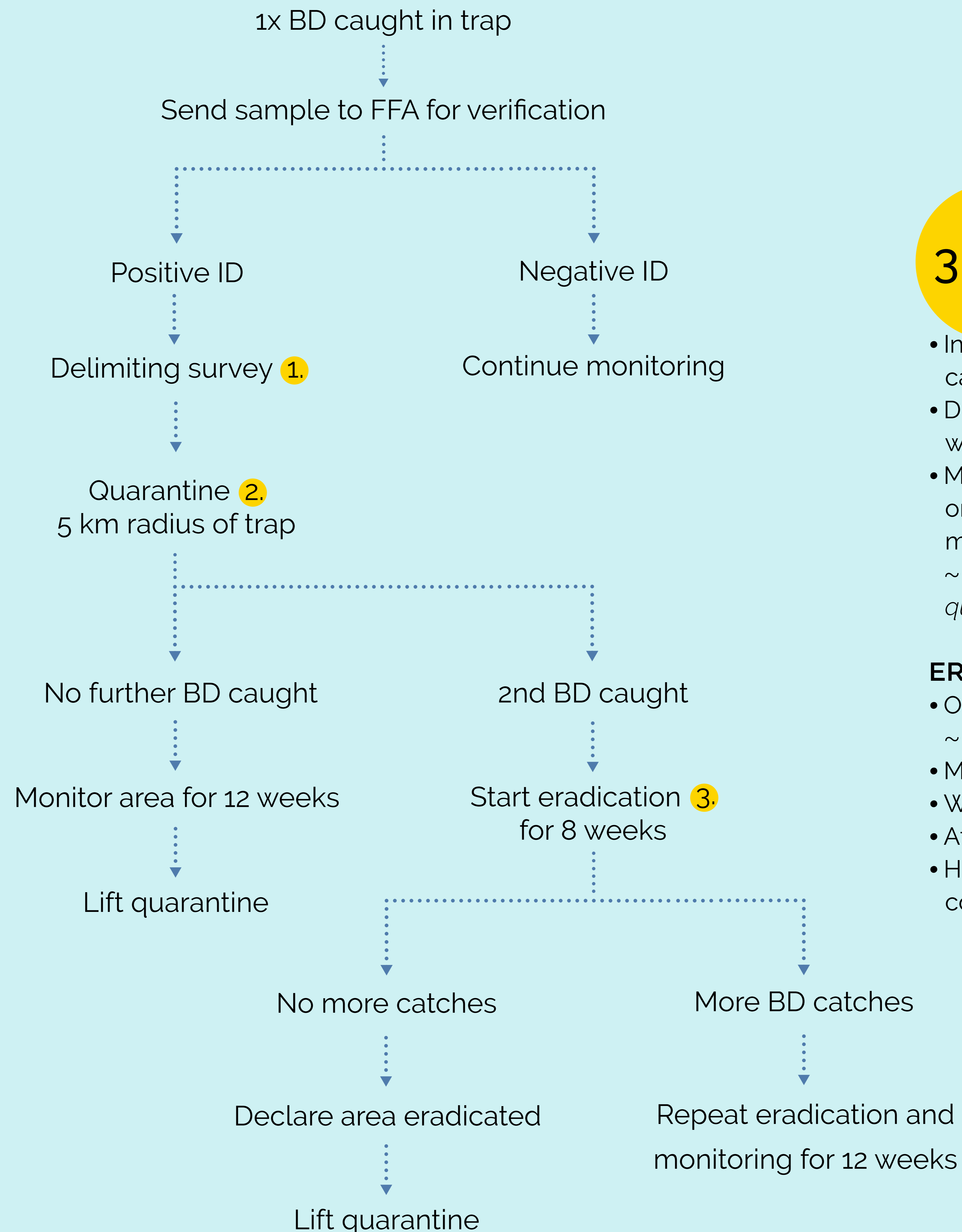
## 2. QUARANTINE

### OBJECTIVE

- Restrict movement of host material through or out of the quarantine area to a pest free area.

### MECHANISM

- DAFF issues an official order to growers or packhouses within 5 km radius.
- If intending to move BD host material or fruit from a quarantine to non-quarantine area one must apply for a removal permit via: [removalpermit@daff.gov.za](mailto:removalpermit@daff.gov.za) or call 012 309 8735/8791/8763.
- Cover consignments of fruit moving to non-infected areas with insect-proof netting; accompanied by a DAFF-issued removal permit.
- Lift quarantine after 12 weeks if no BD catches



## 3. ERADICATION

- Initiate eradication programme following second BD catch in the delimiting survey area ( $\geq 25$  km<sup>2</sup>).
- Duration of eradication is two (2) BD generations—8 weeks.
- Monitoring to verify eradication should take place for one (1) generation—4 weeks—after eradication measures have stopped.  
~ If there are zero (0) catches in this period lift the quarantine.

### ERADICATION MEASURES

- Orchard and field sanitation  
~ Bury fruit—50 cm within quarantine area.
- MAT block at 4/ha.
- Weekly protein baits
- Attract and kill option can be included.
- Home gardens and wild hosts are included in the control programme.

For *Bactrocera dorsalis* monitoring guidelines and the comprehensive action plan visit the Hortgro Science website.